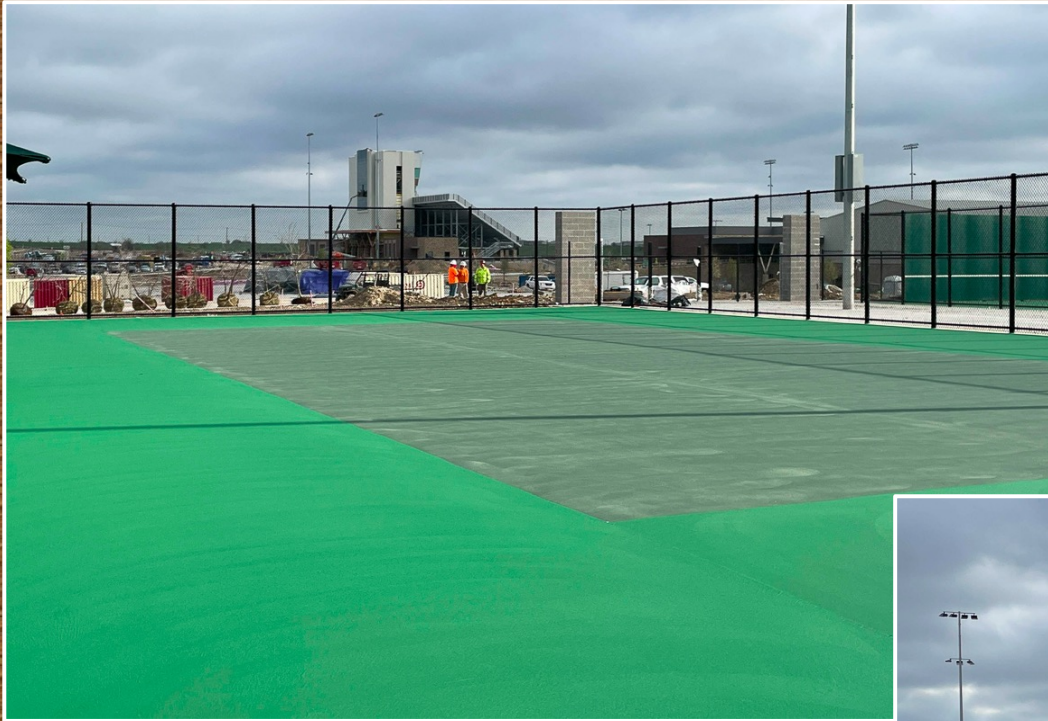




EAGLE MOUNTAIN HS



- Softball field turf logo has been installed.
- Soccer/auxiliary field turf installation in progress.
- Tennis courts surfacing in progress.





- Track asphalt and paving has been installed.
- Dry creek landscaping work is ongoing.
- Dry creek flagstone paving has been installed.

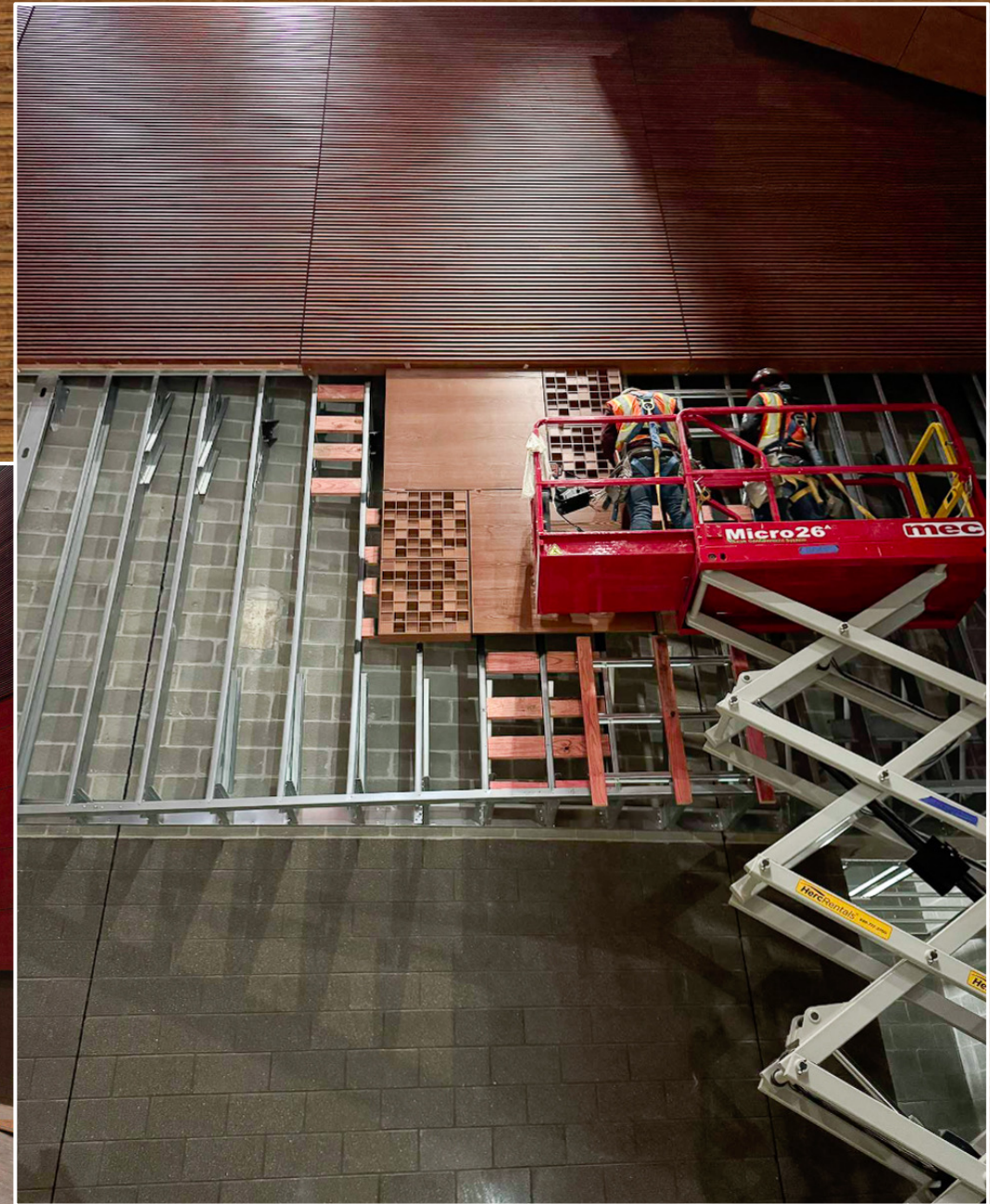




- Indoor practice turf installation is complete.
- Grandstand stairs installed. Home side concourse paving is complete. Stone column wraps have been installed.



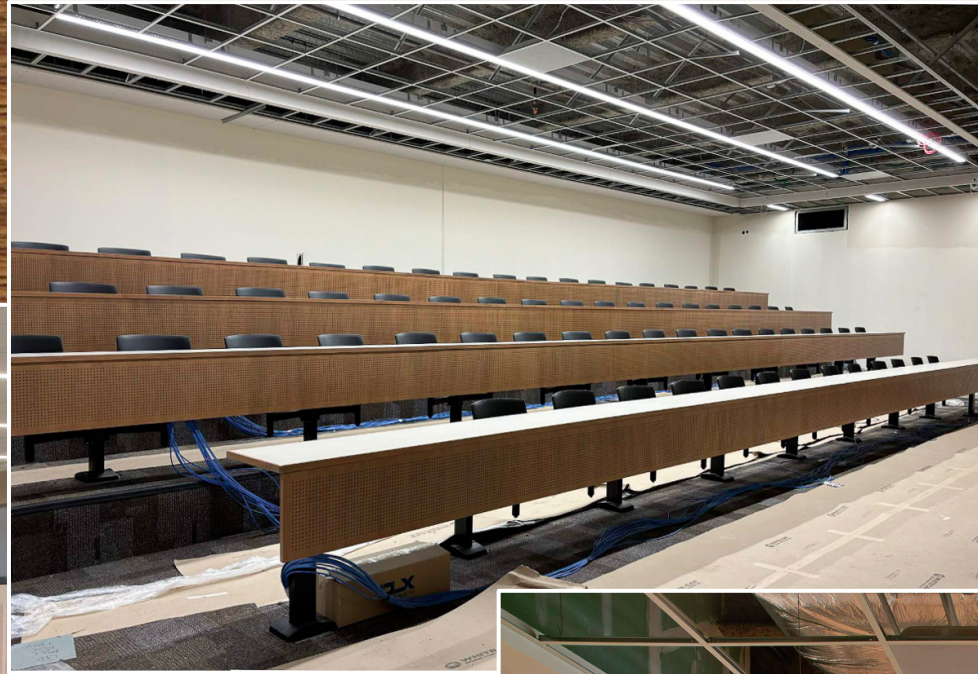
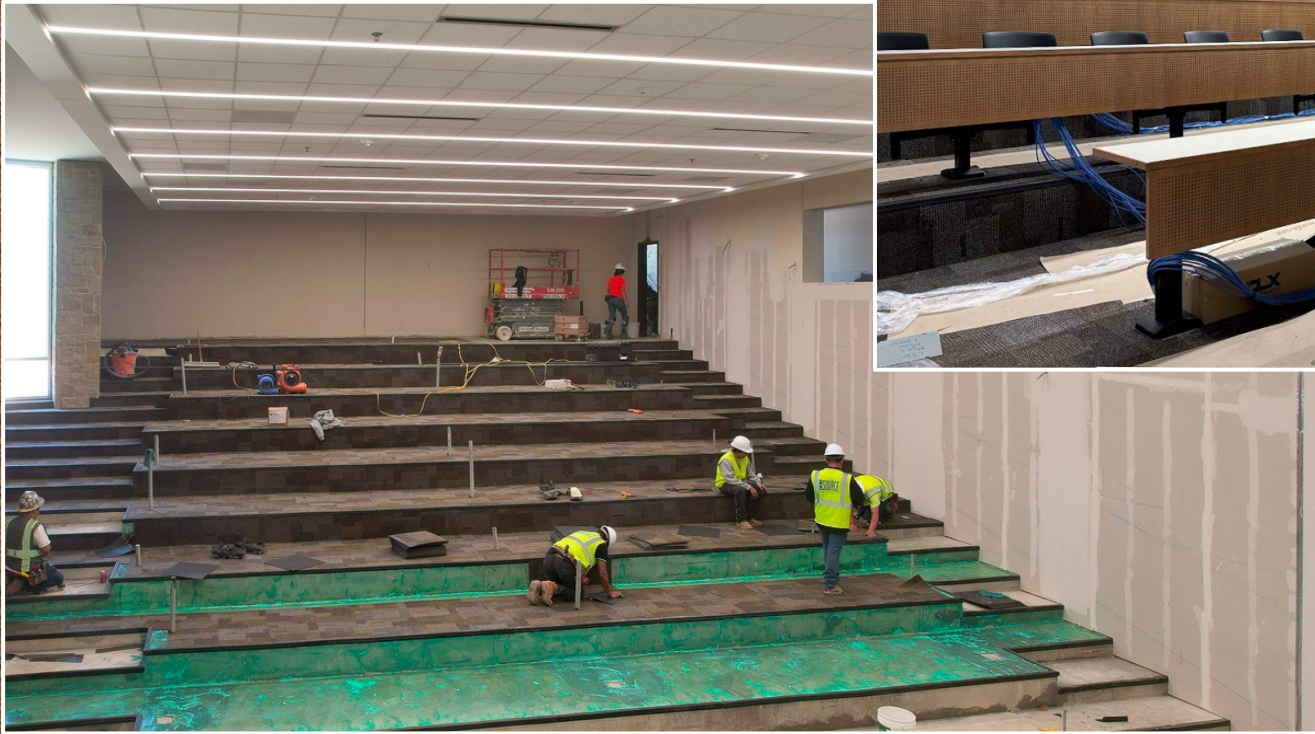
- Auditorium wood veneer panels is ongoing.
- Auditorium wood diffuser panels are in progress.



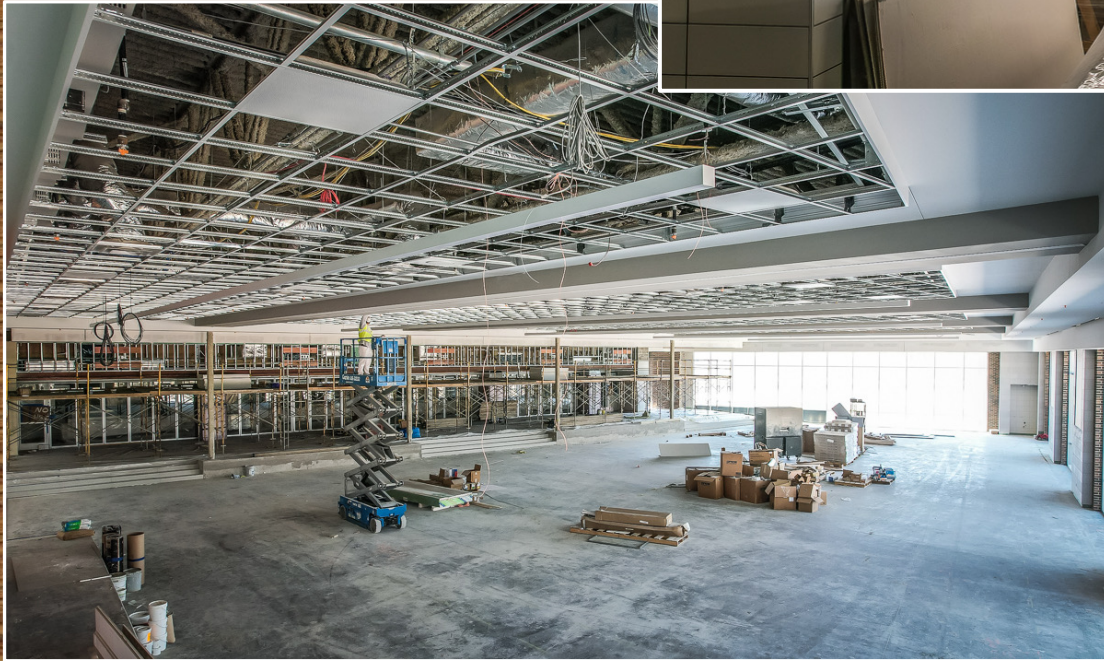


- Fine Arts corridor high ceiling grid and light fixtures have been installed.
- SoundLok practice rooms installed in the band area.
- Main hallway ceiling installation and lighting in progress.





- Large lecture hall carpet installation is in progress.
- Small lecture hall seating has been installed.
- Academic corridor VCT flooring installation is in progress.



- Kitchen serving lines have been installed.
- Cafeteria ceiling installation continues.





EMHS PROJECTED FINISH-OUT TIMELINE

- Fieldhouse, athletic out buildings, and press box begins May 20th with furniture, fixtures, and equipment (FF&E).
- Field house staff move-in on June 17th.
- Main building FF&E begins June 10th.
- Administration move-in June 27th.
- Remaining staff move-in July 8th.

(Subject to change due to receiving proper certificate of occupancy)



Roof and RTU Replacement at Multiple Campuses 2023 Bond

- Due to regulatory changes expected to be made by the Environmental Protection Agency, current generation RTU's that run on R-410A refrigerant will no longer be available after December 31, 2024.
- Should the regulatory changes occur with the new generation equipment, the proposed 2023 Bond replacement plan will be delayed.
- Due to the phase out schedule, a separate early procurement of RTU equipment must be provided so that it can be ordered, manufactured, and delivered prior to December 31, 2024.
- In order to meet shipment deadlines, it is recommended that the District use the (CMAR) Construction Manager at Risk procurement method. This allows the District to create an early equipment package to order all materials prior to construction documents being completed.



WAYSIDE MS UPDATE

- Drainage study has been submitted to the City of Saginaw for review.
- Traffic study will be completed and submitted to the City of Saginaw by the end of February.
- Construction documents continue to be developed and reviewed by the district, contractor, architect, and City of Saginaw.
- The guaranteed maximum price (GMP), demolition package will be brought to the Board for consideration in April for a May start of demolition.
- The GMP grading package will be brought to the Board for consideration in May with a May 21 start date for grading.
- The remaining GMP will be brought to the Board in June for consideration.
- Logistics Plan



WAYSIDE MIDDLE SCHOOL LOGISTICS

March 18, 2024



INDEX

SAFETY AND SECURITY _____ **3**

- ACTION PLANS TO SECURE SITE DURING CONSTRUCTION

COMMUNICATION _____ **4**

- KEY FORMS OF COMMUNICATION TO RELAY INFORMATION TO KEY PARTNERS

PROJECT CONSTRUCTION PHASING _____ **5-7**

- PLAN FOR CONSTRUCTION CYCLES FOR INSTRUCTIONAL BUILDING AND AUXILIARY SUPPORT FACILITIES



***PREPARING FOR GROWTH
UPDATING STUDENT TECHNOLOGY
MAINTAINING FACILITY INVESTMENTS***

SAFETY AND SECURITY

SAFETY AND SECURITY

- SECURITY OF CONSTRUCTION SITE
- PLAN FOR STUDENT WALKERS, BIKERS
- TRAFFIC PLAN
- EMS ISD POLICE/SECURITY SUPPORT
- PLAN FOR WMS ATHLETICS



COMMUNICATION

KEY PARTNERS

- NEIGHBORS, COMMUNITY, CAMPUSES, CITY OF SAGINAW, EMS ISD OPERATIONS, EMS ISD COMMUNICATIONS, EMS ISD TRANSPORTATION, EMS ISD ATHLETICS

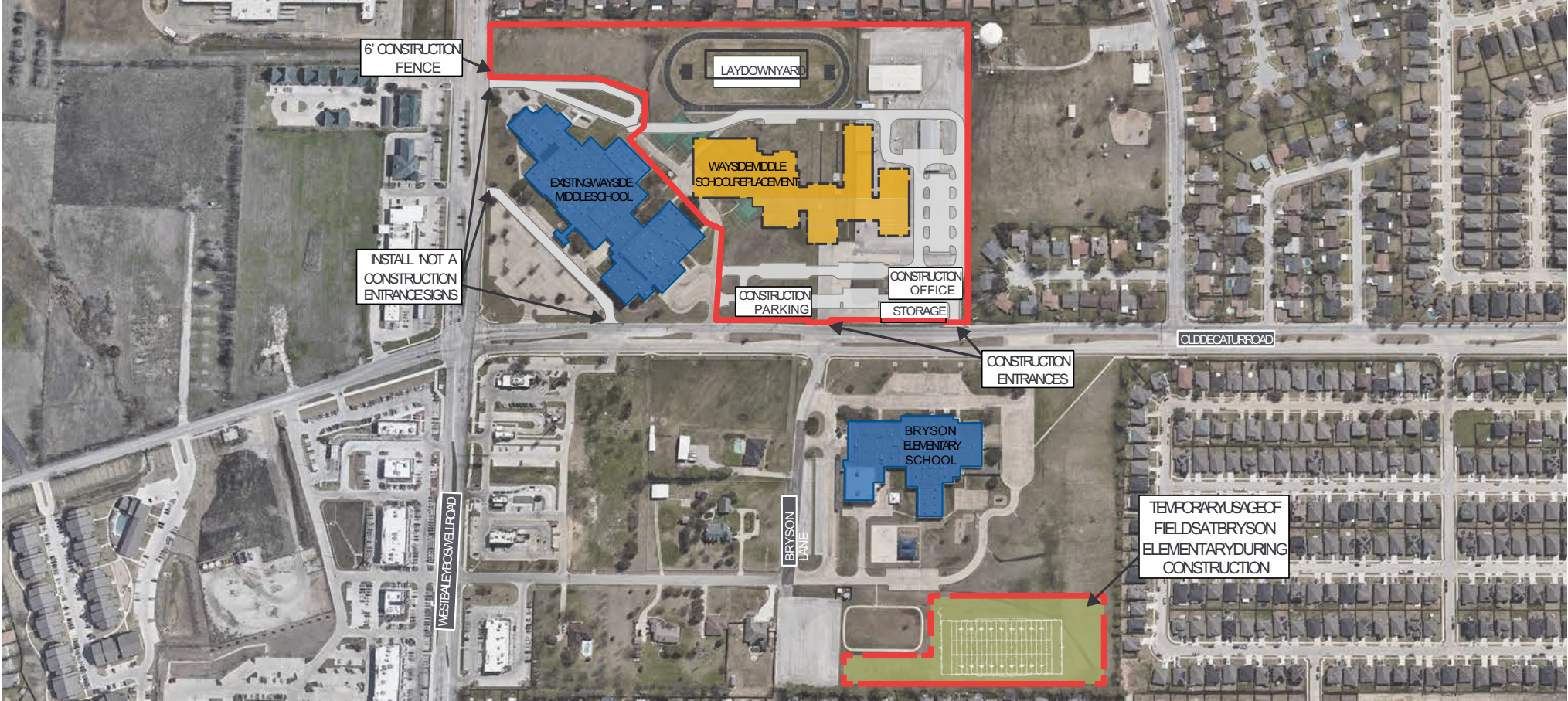
METHODS

- KEY FORMS OF COMMUNICATION TO RELAY INFORMATION TO KEY PARTNERS
 - WAYSIDE MS
 - BRYSON ES
 - EMS ISD COMMUNITY



PROJECT CONSTRUCTION PHASING

PHASE 1



JUN 2024: PROJECT CONSTRUCTION

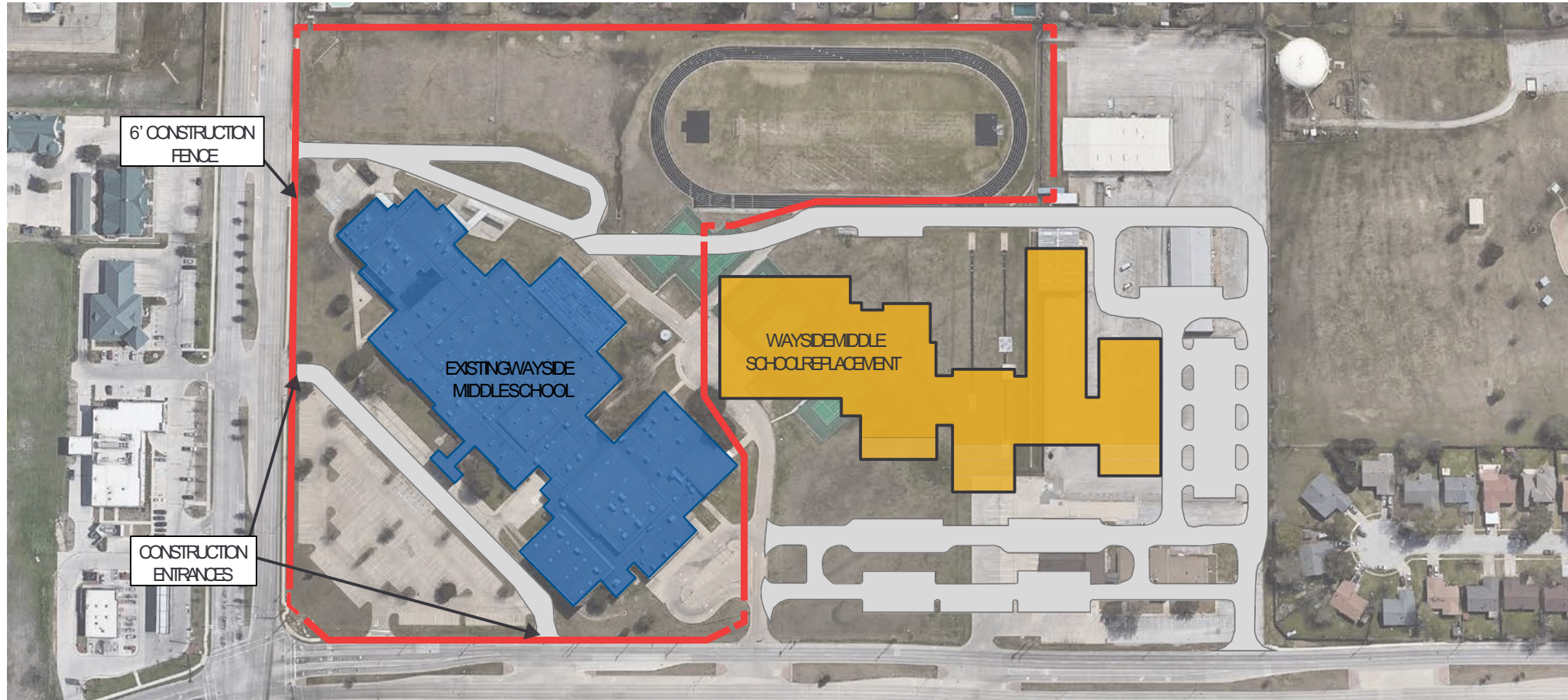
DEC 2025: SCHOOL MOVE INTO NEW BUILDING

DEC 2026: PROJECT COMPLETION



PROJECT CONSTRUCTION PHASING

PHASE 2



JUN 2024: PROJECT CONSTRUCTION

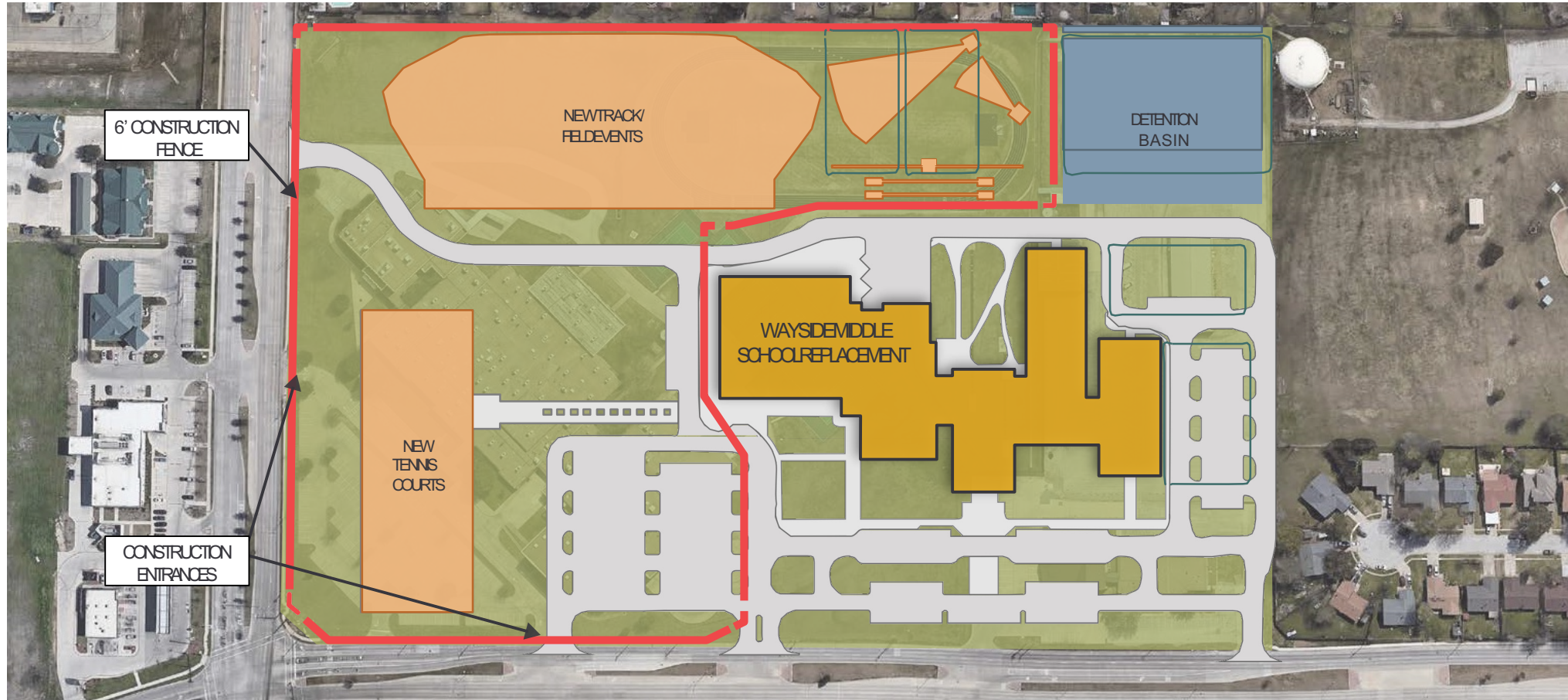
DEC 2025: SCHOOL MOVE INTO NEW BUILDING

DEC 2026: PROJECT COMPLETION



PROJECT CONSTRUCTION PHASING

PHASE 2



JUN 2024: PROJECT CONSTRUCTION

DEC 2025: SCHOOL MOVE INTO NEW BUILDING

DEC 2026: PROJECT COMPLETION



THANK YOU!



**EAGLE MOUNTAIN
SAGINAW ISD**

Fostering a Culture of Excellence



VLK|ARCHITECTS

